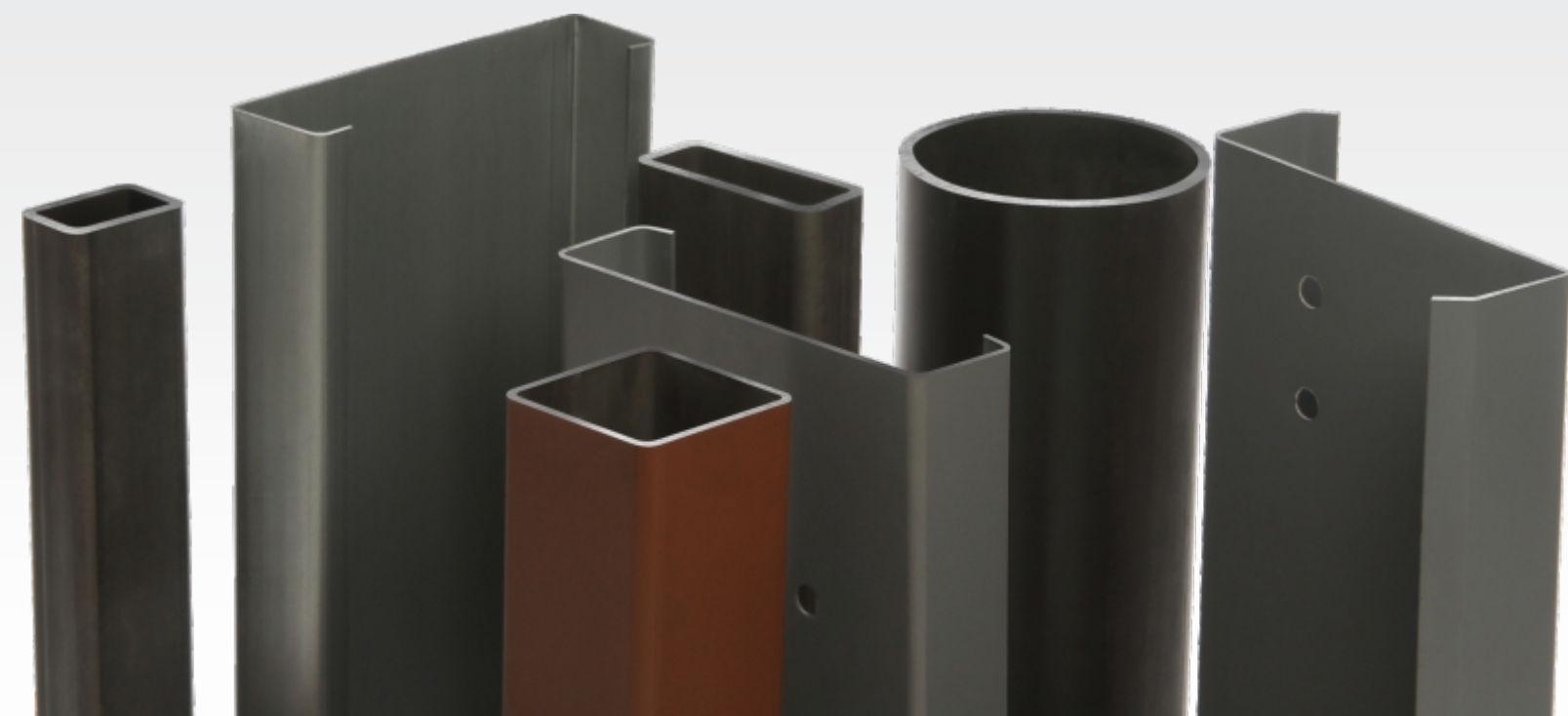
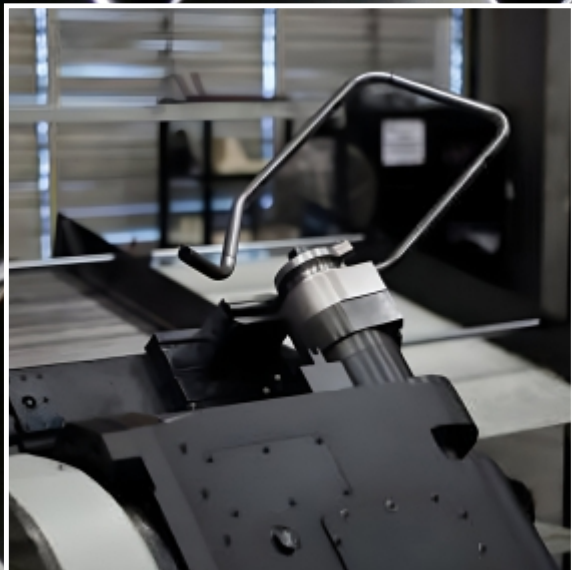
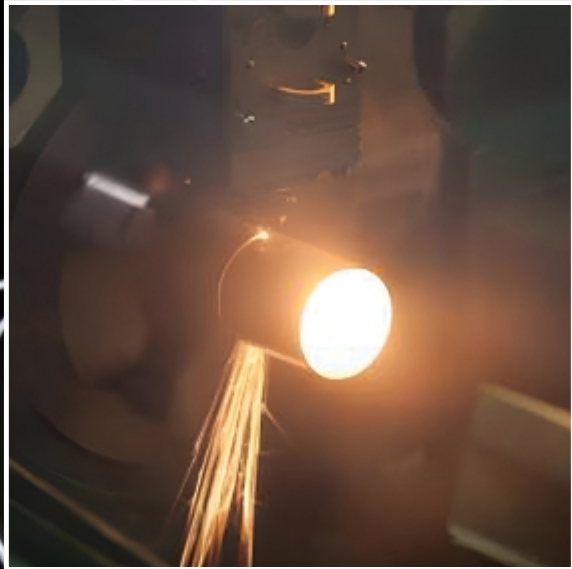
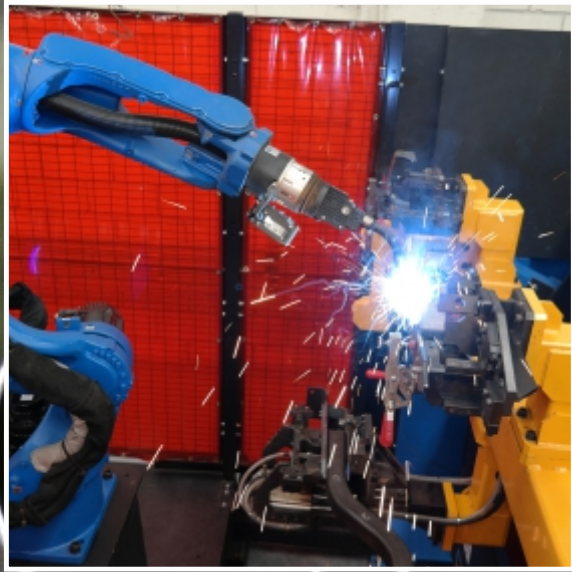




## **MECHANICAL & STRUCTURAL CARBON STEEL TUBING**







## ABOUT US

For over seven decades, Prolamsa® has been recognized for producing superior structural and mechanical steel tubing. Our unwavering commitment to customer satisfaction is realized through our innovative and high-quality processes, which are certified under ASTM standards and ISO 9001.

Our extensive range of ERW carbon steel products caters to diverse markets including construction, furniture, automotive, storage, solar energy, and both major and minor equipment sectors.



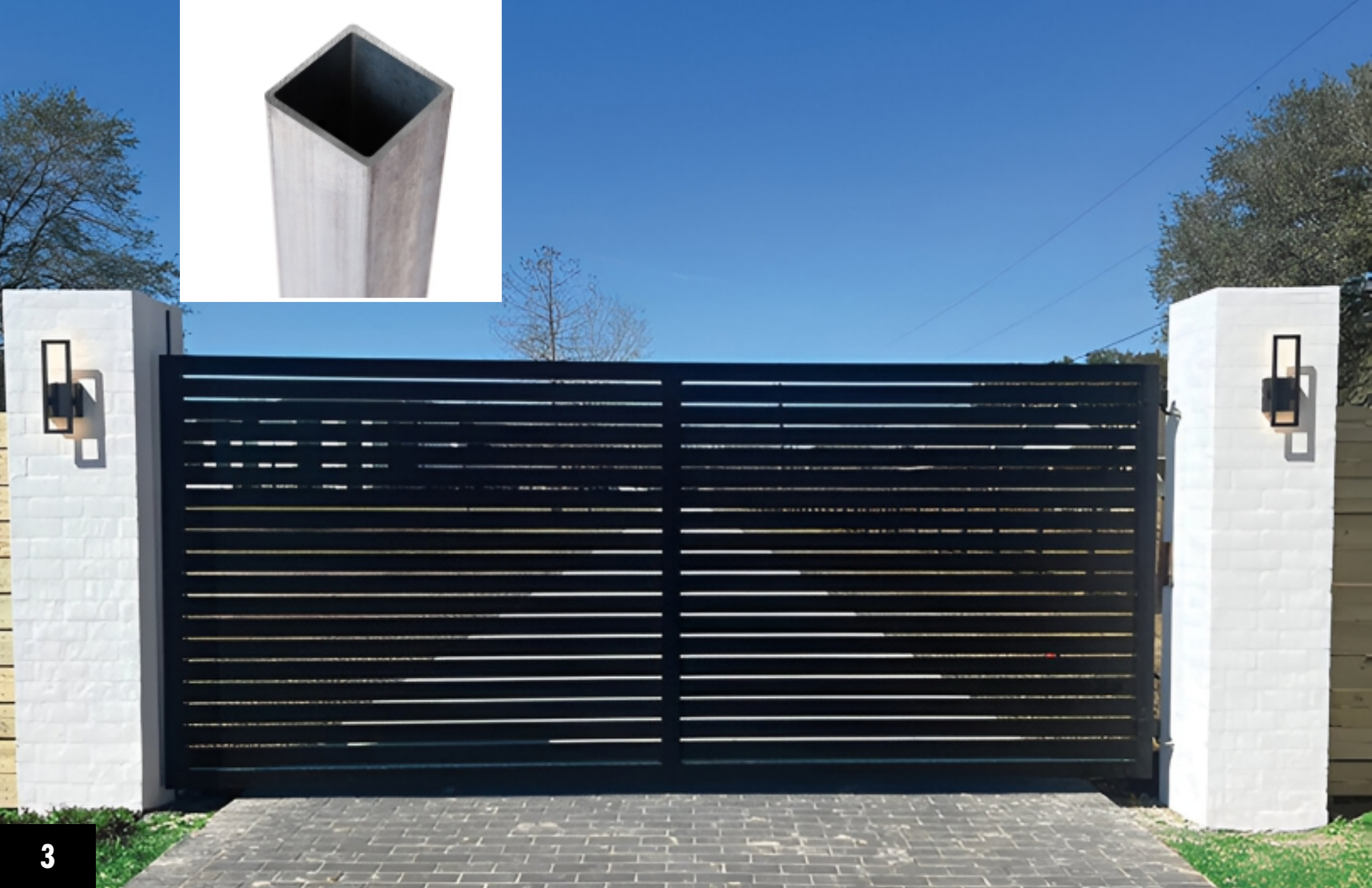
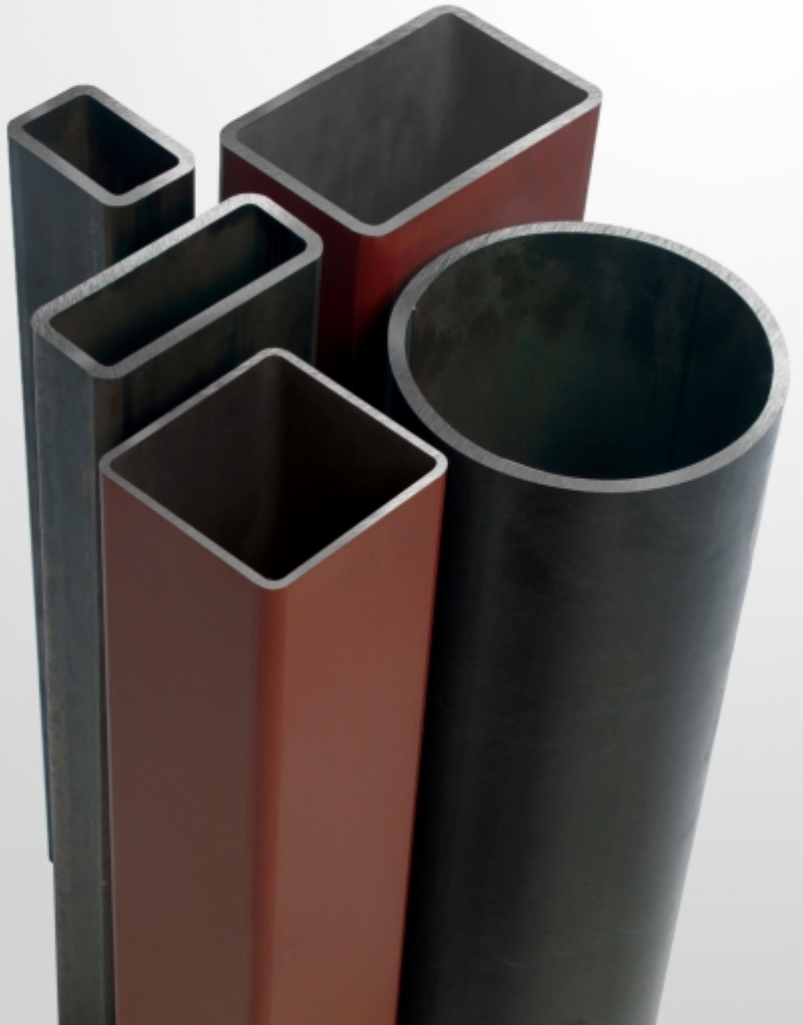
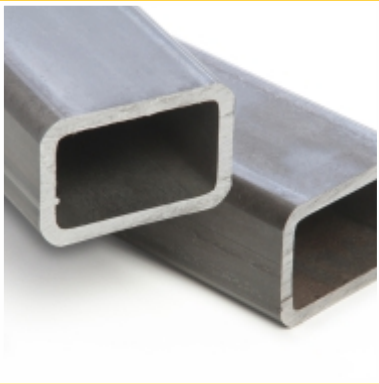


# CONSTRUCTION

HSS AND STEEL COMPONENTS  
FOR YOUR STRUCTURE.

APPLICATIONS:

- CAR PORTS • STRUCTURES
- DOORS AND WINDOWS • FENCES
- POLES • GREENHOUSES • SCAFFOLDS



# AUTOMOTIVE

HIGH QUALITY PRODUCTS FOR  
TIER 1 & 2 SUPPLIERS.

APPLICATIONS:

- SEATING STRUCTURES • CROSS MEMBERS
- HINGES • HEAD RESTS • TOWING COMPONENTS
- STEERING WHEELS







## FURNITURE

PRODUCTS READY FOR YOUR  
ASSEMBLY LINE.

### APPLICATIONS:

- OFFICE • MEDICAL USE • HOME
- RECREATIONAL



## MAJOR EQUIPMENT

QUALIFIED MANUFACTURER OF ROPS  
AND FOPS (ROLL OVER AND FALLING  
OBJECT PROTECTIVE STRUCTURES).

### APPLICATIONS:

- TRACTORS/AGRICULTURAL EQUIPMENT
- TRAILERS • MINING EQUIPMENT





# SOLAR ENERGY

OUR GALVANIZED PRODUCTS ARE  
PERFECT FOR THE CONSTRUCTION OF  
SOLAR PARKS.

## APPLICATIONS:

- SOLAR TRACKERS AXLES • SOLAR PANEL FRAMES
- SUPPORT POLES • SOLAR RACKS • SOLAR PANEL MOUNTS



# MINOR EQUIPMENT

TECHNICAL CONSULTATION DURING  
PRODUCT DESIGN PHASE.

## APPLICATIONS:

- HVAC • OUTDOORS • TRANSPORT
- TRANSFORMERS (HEAT EXCHANGERS)



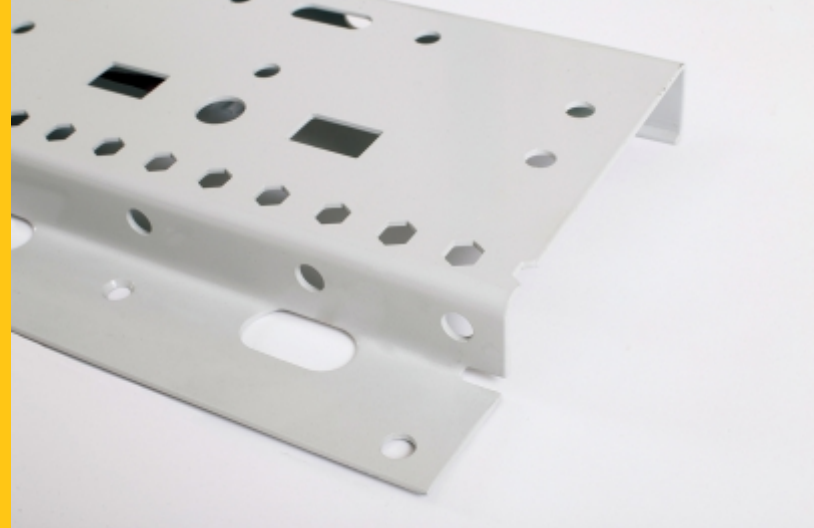


# STORAGE

NEW PRODUCTS ACCORDING  
TO REQUERIMENTS.

## APPLICATIONS:

- CONTAINERS • SHELVES/EXHIBITORS • CONVEYOR BELTS • MATERIAL HANDLING SYSTEMS

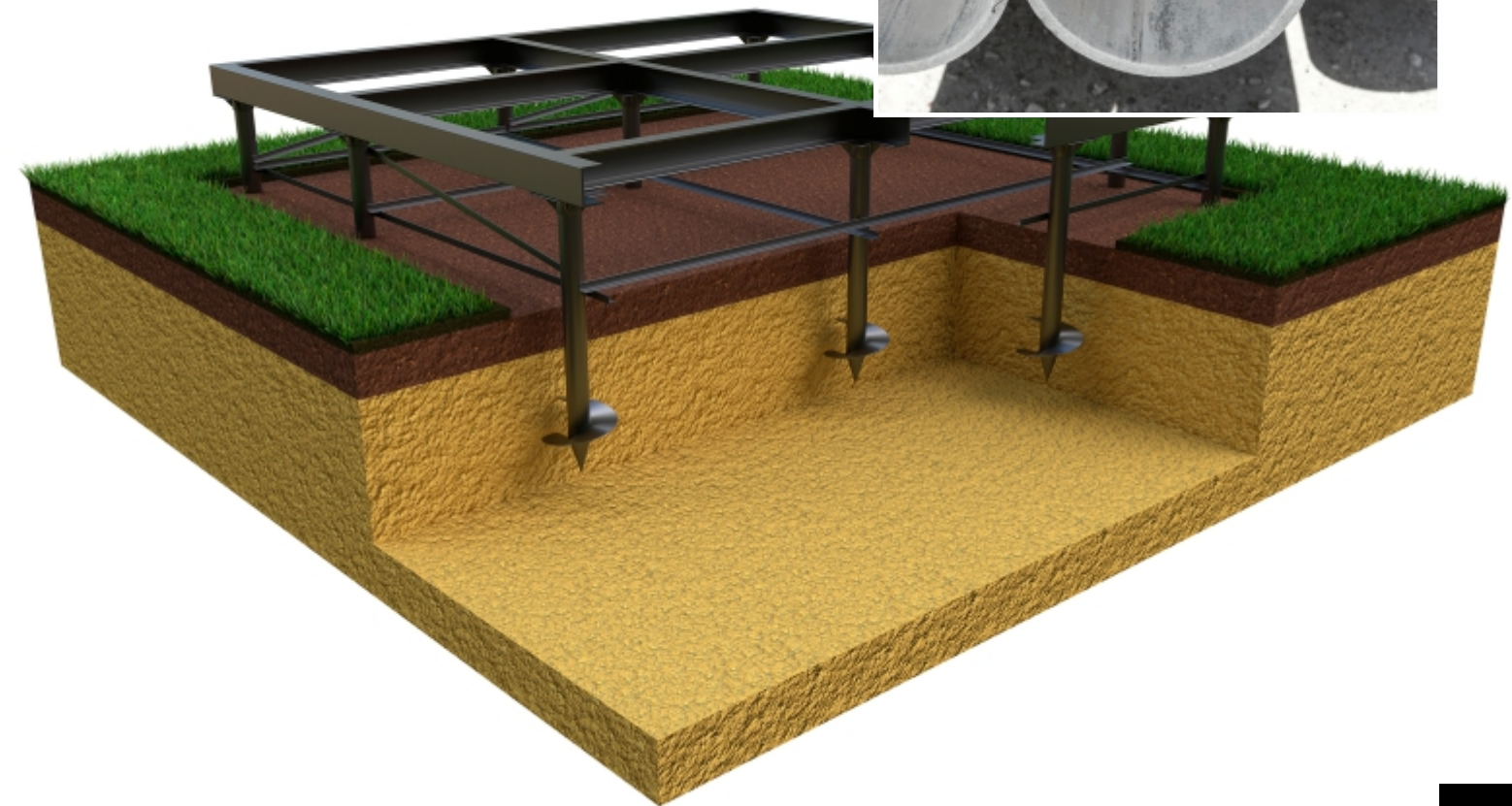


# FOUNDATION STEEL PIERS

STEEL PILES TO PROVIDE STABILITY ON  
COMMERCIAL & RESIDENTIAL STRUCTURES.

## APPLICATIONS:

- FOUNDATION REPAIRS • STEEL PIERS  
• STEEL SLEEVES & CAPS





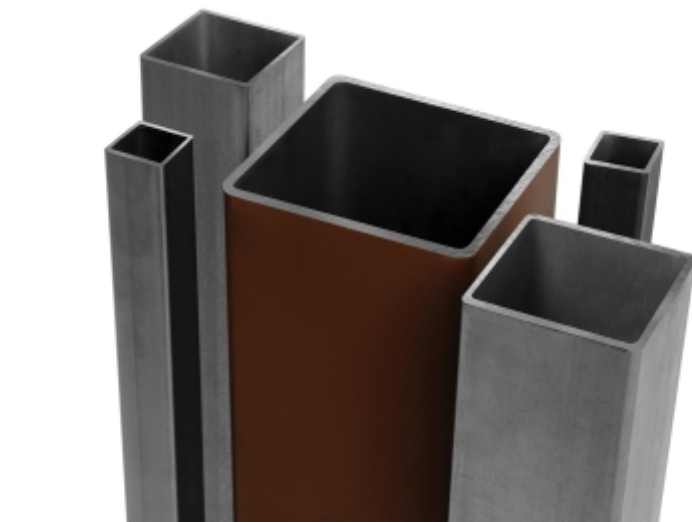


# PRODUCTS

## ROUNDS

0.394" - 6.625"

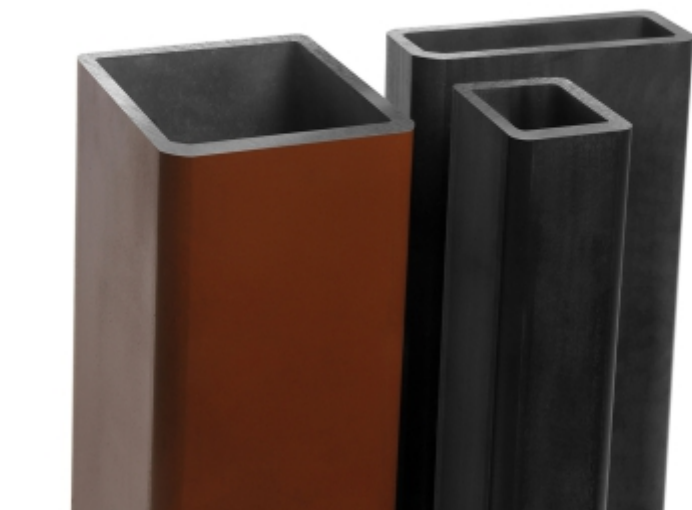
10 mm - 168 mm



## SQUARES

0.394" - 6"

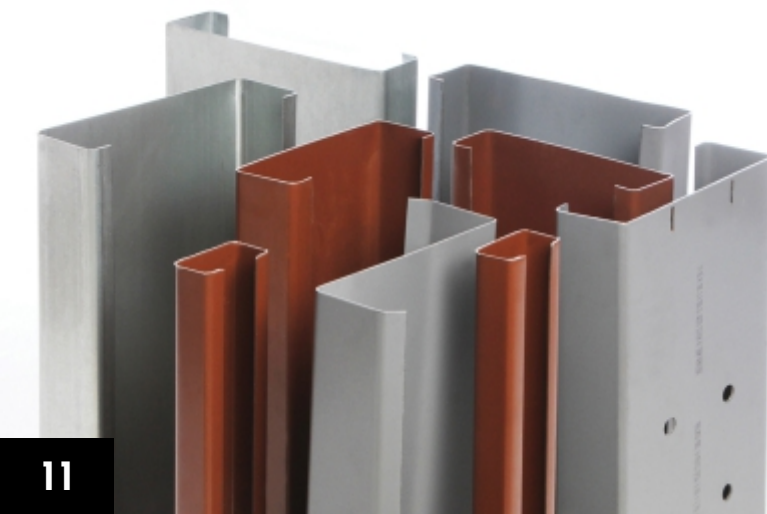
10 mm - 152 mm



## RECTANGULARS

0.394" X 0.591" - 8" X 4"

10 mm X 15 mm - 203 mm X 102 mm



## PURLINS

3" - 14"

76 mm - 355 mm

## WALL THICKNESS

Up to 0.280"

7.11 mm

# TAILOR - MADE PRODUCTS

WE CAN PRODUCE ANY REQUIRED SHAPE.

## TUBING:

- Special Shapes
- Round
- Square
- Rectangular
- Oval
- Elliptical

## STANDARD SPECIFICATION:

- ASTM A513 Type 1&2
- ASTM A500 Grade A, B or C

## RAW MATERIAL:

- Hot-rolled steel
- Hot-rolled pickled steel
- Cold-rolled steel
- Dual Phase Steel

FROM LOW-CARBON STEEL  
TO MARTENSITIC STEEL





# LASER CUTTING

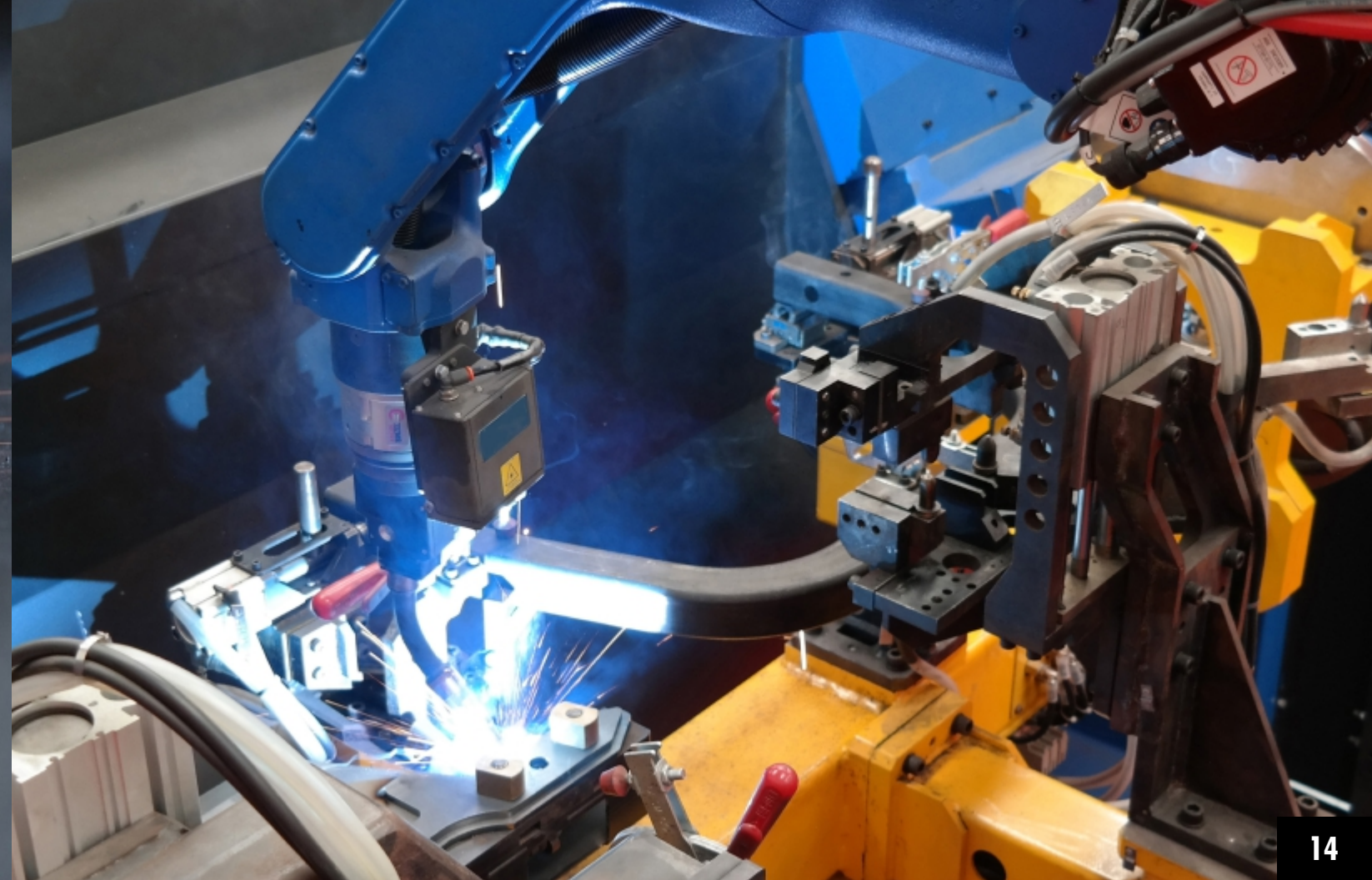
Cuts, perforations and finishes with a high degree of complexity and quality. Ideal where accuracy and precision is critical.

- **Tubular laser cutting:** round, rectangular and square carbon steel tubes of thicknesses up to 0.32" (8 mm)
- **2-D Laser:** Cuts carbon steel sheets with dimensions of 9.84' x 6.56' (3 x 2 m) and a maximum thickness of 2.00" (51 mm)



# MANUAL AND ROBOTIC WELDING

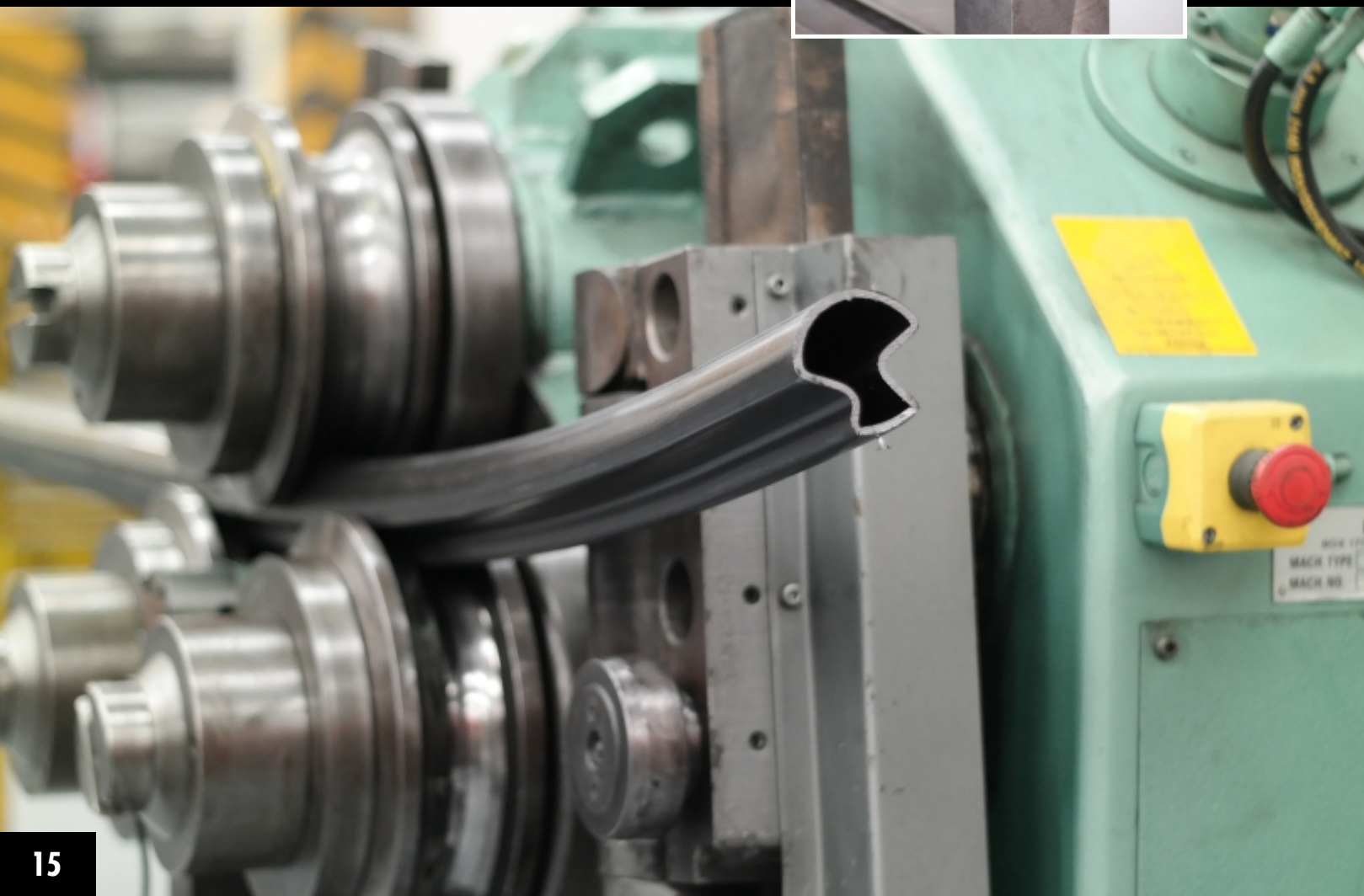
- **Ferris Wheel Robotic Welding System:** 1 or 2 synchronized robots. For pieces weighting up to 1,653 lb (750 Kg)
- **Manual Welding:** AWS (American Welding Society) certified personnel





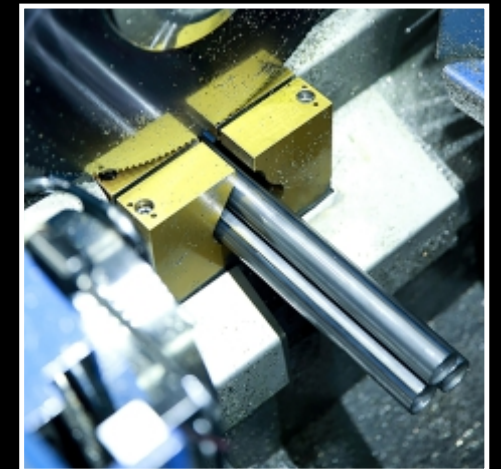
# BENDING & ROLLING

- **CNC tube bending:** round, rectangular and square carbon steel tubes up to 6" (152 mm) outside diameter (OD)
- **Press brake (2D bending curtain)** for thicknesses up to 0.472" (12 mm)
- **Rolling (Roundo)** for steel tubes up to 5" (127 mm)



## CNC CUT TO LENGTH

- Carbon steel tubes with diameters up to 5" (127 mm) and a maximum thickness of 0.63" (16 mm)
- Miter saw equipments have the capacity of cutting carbon steel profiles at 90 °, 60° and 45° with very small tolerances

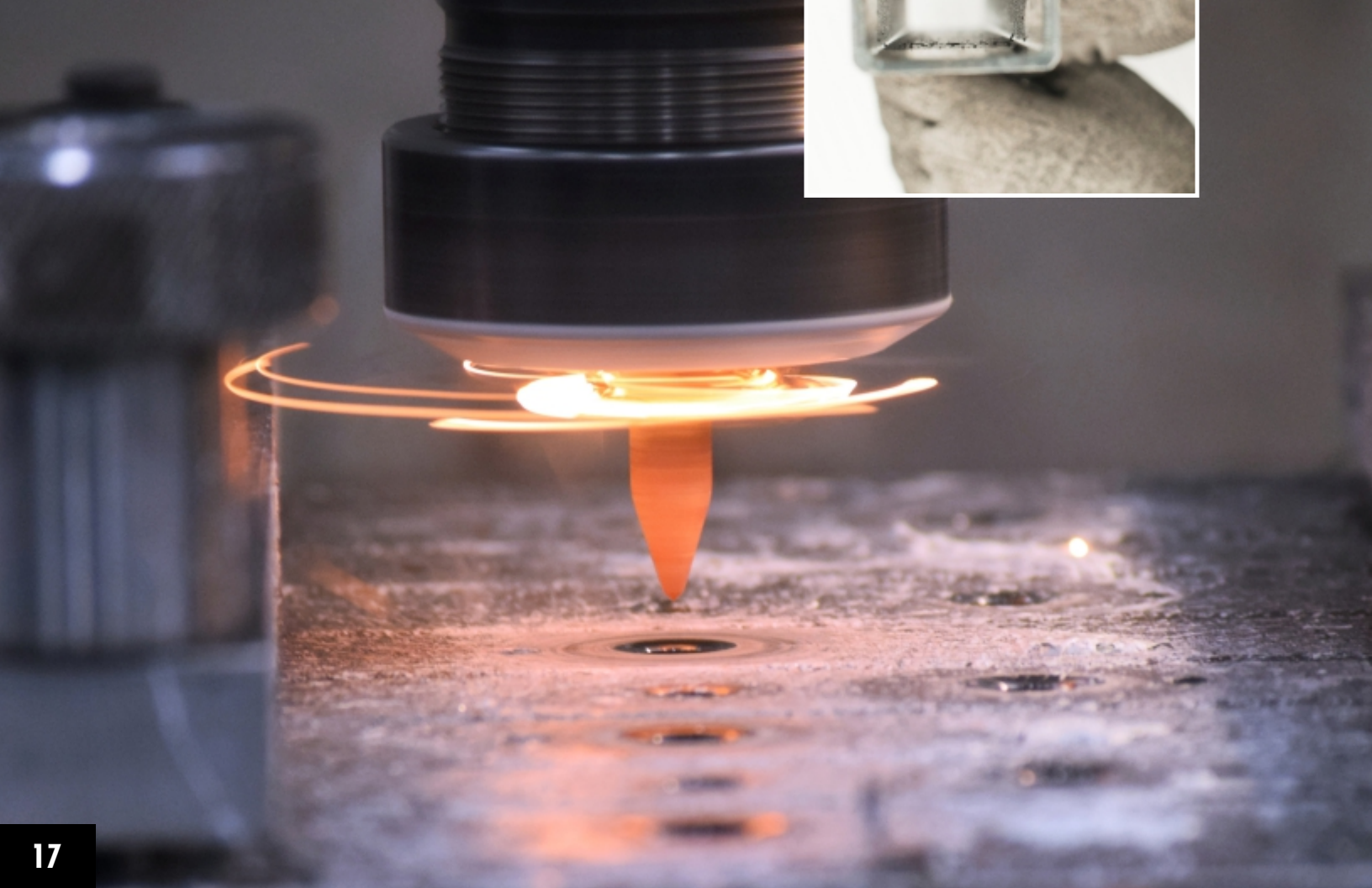
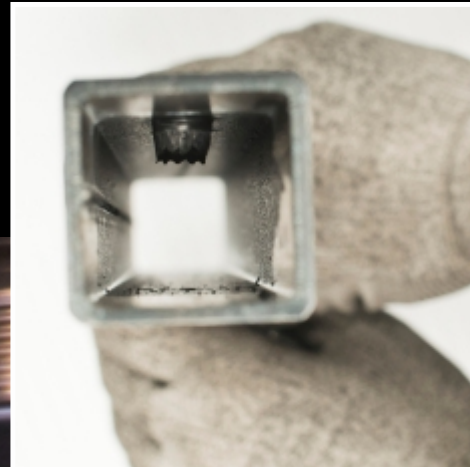






## OTHER VALUE ADDED PROCESSES

- Flow drilling
- Reaming & Chamfering
- Punching
- Purlin Perforation



## WHERE TO FIND US



**HEADQUARTERS USA**  
Houston, TX



**PROLAMSA LAREDO**  
Laredo, TX  
ERW Tube Mills



**AXIS PIPE AND TUBE**  
Bryan, TX  
Products offered: OCTG & Line Pipe for the oil and gas market, ASTM A53, A500, A252 & HSS.



**ESCOBEDO PLANT**  
Escobedo, Mexico  
ERW Tube Mills



**MONTERREY PLANT**  
Monterrey, Mexico  
Services offered: Cut-to-length, laser cutting (2D, 3D & 5-Axle), end forming, CNC bending, press-brake, Miter saw, manual & automated welding cells, CNC bending curtain, Section Rolling, deburring, reaming and chamfering.



**TEPEJI PLANT**  
Tepeji del Río, Mexico  
ERW Tube Mills  
Services offered: Roll Forming, Cut-to-length, 3D laser cutting, end forming, CNC bending and press-brake.



**PROSANKIN**  
Pesqueria, Mexico  
Products offered: DOM (Drawn over Mandrel) & CDS (Cold Drawn Seamless) tubing.





**Headquarters**  
**16420 Park Ten Place, Suite 412**  
**Houston, TX 77084**  
**Phone: (281) 494-0900**

**Plant**  
**12002 Auburn Road**  
**Laredo, TX 78045**

**[sales@prolamsausa.com](mailto:sales@prolamsausa.com)**  
**[www.prolamsausa.com](http://www.prolamsausa.com)**